

***Industrial and  
Flood Light  
Upcoming  
Products***



**HAVELLS**

# LED Flood Light 200-240-300 W

Launching  
Oct 1<sup>st</sup>  
week

JETA -LED FLOOD  
LIGHT



Luminaire

Applications: Highways, Highmast, Road Lighting, Large Areas, Squares, Gardens, stadiums, Public places, façade etc.



Note: Delivery time 8-12 weeks after commercially clear order confirmation.

# LED Flood light 200 W

## JETA 200W LED FLOOD LIGHT

Type of LED	High Power LEDs NICHIA/OSRAM/CREE
system Wattage	200W+/-5%
No. of LEDS	96
Driver Efficiency	>85%
LED Luminous Efficacy	>130lm/w
Lamp's Efficiency	> 90%
Color Index(CRI)	Ra > 70
Color Temperature(CCT)	Cool white: 5500-6500K
Input Voltage	140-270V AC
Frequency Rance	50-60Hz
Power Factor(PF)	>0.90
Surge Protection	>4.0 KV
Total Harmonic Distortion(THD)	< 10%
Storage Temperature	- 40°C-80°C
Working Environment	0°C to 50°C;10%-90%RH
Junction Temperature(Tj)	75°C±10%(ta=25°C)
Light Body	PDC Aluminum
Working Lifetime	> 50000hrs
Dimensions	530*325*195mm
weight	9kg
IP Rating	IP66



Note: Final specifications of the product may vary from the above details.

# LED Flood light 240 W

## JETA 240W LED FLOOD LIGHT

Type of LED	High Power LEDs NICHIA/OSRAM/CREE
system Wattage	240W+/-5%
No. of LEDs	96
Driver Efficiency	>85%
LED Luminous Efficacy	>130lm/w
Lamp's Efficiency	> 90%
Color Index(CRI)	Ra > 70
Color Temperature(CCT)	Cool white: 5500-6500K
Input Voltage	140-270V AC
Frequency Rance	50-60Hz
Power Factor(PF)	>0.90
Surge Protection	>4.0 KV
Total Harmonic Distortion(THD)	< 10%
Storage Temperature	- 40°C-80°C
Working Environment	0°C to 50°C;10%-90%RH
Junction Temperature(Tj)	75°C±10%(ta=25°C)
Light Body	PDC Aluminum
Working Lifetime	> 50000hrs
Dimensions	530*325*195mm
weight	9kg
IP Rating	IP66



Note: Final specifications of the product may vary from the above details.

# LED Flood light 300 W

## JETA 300W LED FLOOD LIGHT

Type of LED	High Power LEDs NICHIA/OSRAM/CREE
system Wattage	300W+/-5%
No. of LEDS	120
Driver Efficiency	>85%
LED Luminous Efficacy	>130lm/w
Lamp's Efficiency	> 90%
Color Index(CRI)	Ra > 70
Color Temperature(CCT)	Cool white: 5500-6500K
Input Voltage	140-270V AC
Frequency Rance	50-60Hz
Power Factor(PF)	>0.90
Surge Protection	>4.0 KV
Total Harmonic Distortion(THD)	< 10%
Storage Temperature	- 40°C-80°C
Working Environment	0°C to 50°C;10%-90%RH
Junction Temperature(Tj)	75°C±10%(ta=25°C)
Light Body	PDC Aluminum
Working Lifetime	> 50000hrs
Dimensions	670*325*195mm
weight	11 kg
IP Rating	IP66



Note: Final specifications of the product may vary from the above details.

## Endura Via Duct 24W

Launching  
Nov 1<sup>st</sup>  
week

Endura LED  
Via Duct 24W



Applications: Cable trench, Wall washer, Viaducts



# Endura Via Duct 24W

## Endura LED Via Duct 24W

System Wattage	24W
Power Efficiency	>85%
Lumen Output	2200 Lumens
Color Index(CRI)	>70
View Angle	120
Lamp's Efficiency	> 90%
Color Temperature(CCT)	Cool white: 5500-6500K
Input Voltage	140-270V AC
Frequency Rance	50-60Hz
Power Factor(PF)	>0.90
Surge Protection	>4.0 KV
Total Harmonic Distortion(THD)	< 15%
Storage Temperature	- 40°C--80°C
Working Environment	0°C to 50°C;10%-90% RH
Junction Temperature(Tj)	70°C±10%(ta=25°C)
Cover	Polycarbonate
Light Body	Anodized Aluminium profile
Working Lifetime	> 50000hrs
IP Rating	IP67
IK rating	08



# LED Round Highbay 100 W/ 150 W

Launching  
Nov 1<sup>st</sup>  
week

Highbrite Saucer  
100/ 150 W



Applications: Highways, Road Lighting, Large Areas, Squares, Gardens, stadiums, Public places, etc.





# Product Specs

**HighBrite**  
**Saucer 100 W**

System Power (Watts)	100w
LED power	>107w
Input Voltage range	140 – 270VAC, 50Hz
LED Make	Nichia/Cree/Osram
Type of LED	Power LED
Lumen Efficiency	>100lm/W
CCT(K)	5500- 6500K
CRI(Ra)	>70
Electronic Driver Efficiency	>85%
Total Harmonic Distortion (THD%)	<15%
Power Factor	>0.9
Surge Protection	>3.0 KV
Storage Temperature	– 40°C to 80°C
Working Ambient Temp.	– 10°C to 45°C
Working Humidity	10%-90%RH
Fixture Type	Aluminum Pressure Die Cast
Front Cover	Toughened Glass
IP Rating	IP65



# Product Specs

System Power (Watts)	150w
LED power	>130w
Input Voltage range	140 – 270VAC, 50Hz
LED Make	Nichia/Cree/Osram
Type of LED	Power LED
Lumen Efficiency	>100lm/W
CCT(K)	5500- 6500K
CRI(Ra)	>70
Electronic Driver Efficiency	>85%
Total Harmonic Distortion (THD%)	<15%
Power Factor	>0.9
Surge Protection	>3.0 KV
Storage Temperature	– 40°C to 80°C
Working Ambient Temp.	– 10°C to 45°C
Working Humidity	10%-90%RH
Fixture Type	Aluminum Pressure Die Cast
Front Cover	Toughened Glass
IP Rating	IP65

*HighBrite*  
*Saucer 150 W*



**HAVELLS**

# Jeta Linier 80W, 100W & 150W

Launching  
Oct 1<sup>st</sup>  
week



Applications:

Food and Beverage, Heavy Industrial & Manufacturing area,  
Cold Storage, Warehouse.

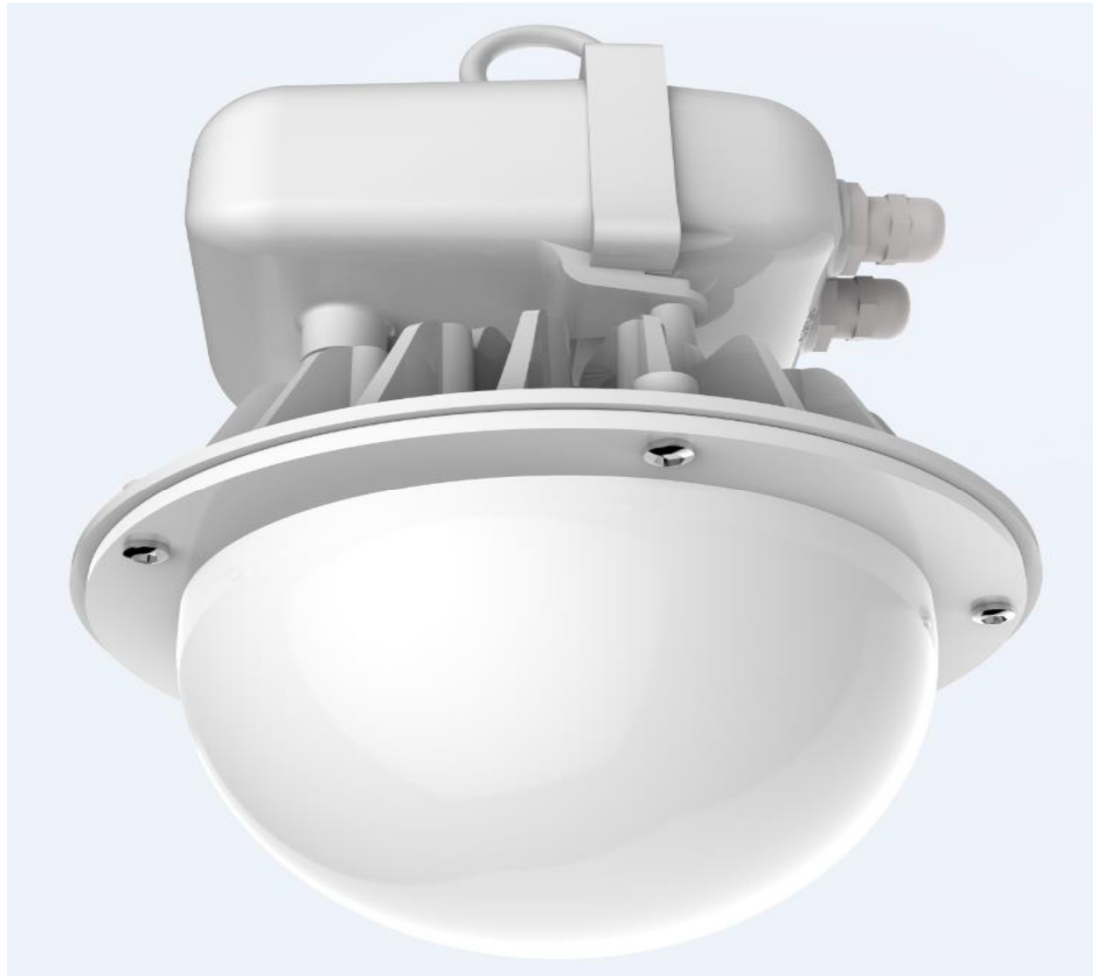


**HAVELLS**

## LED Wellglass 24W

Launching  
Nov 1<sup>st</sup>  
week

*LED Wellglass*



Applications:

Food and Beverage, Heavy Industrial & Manufacturing area,  
Cold Storage, Warehouse.



**HAVELLS**

## Technical Parameters 24 W

- ✓ Light Source - LED COB
- ✓ Rated Voltage – 220-240V/50Hz
- ✓ Operating Voltage - 140-270V/50Hz
- ✓ Wattage - 24W (System)
- ✓ Drive Current - 600 mA
- ✓ THD < 10%
- ✓ Power Factor  $\geq 0.95$
- ✓ Ingress Protection - IP65 to EN60529
- ✓ Installation – Eye Bolted suspension mounting
- ✓ Control Gear - Electronic control gear
- ✓ Termination - 3 core 6mm<sup>2</sup> max, with loop -in & loop-out.

